



Network Switch Set-up Guides

Araknis

AN-210 & AN-310 Series

when used in a 1Gb Blustream Multicast system, in a single switch configuration system

Contents

Introduction 03

Switch Requirements 03

Network Topology for Multicast 03

Connecting to the Switch Web-GUI 04

Activating IGMP Snooping 05

Activating Jumbo Frames 06

Amending your IP Address in Windows 07 - 08

Amending your IP Address in Mac OS 09 - 10

Introduction

The 1Gb Blustream Multicast solutions require a 1Gb managed network switch in order for HDMI distribution to be achieved reliably, and without any loss of performance.

The following guide is a step-by-step instruction on how to connect and configure your network switch to support 1Gb Blustream Multicast products.

Please ensure each step is followed and checked at each stage. Before exiting the set-up, it is advisable to reboot the switch, log-in, and double check all settings.

Switch Requirements

The following features need to be enabled on the network switch being used for a Blustream Multicast system:

1. Multicast
2. Jumbo Frames / Jumbo Packets / MTU
3. IGMP Management / Snooping
4. PoE (where being utilised)

Feature explanation:

- **Multicast** (one-to-many or many-to-many distribution) is a group communication where information is addressed to a group of network devices simultaneously (Blustream Multicast products).
- **Jumbo Frames / Jumbo Packets / MTU** are Ethernet frames with more than 1,500 bytes of payload. Conventionally, jumbo frames can carry up to 9,216 bytes of payload and must be activated in order to send large packets of data for HDMI distribution. Without this enabled, the ability for the IP***UHD-TX units to transmit the HDMI data will not be achievable.
- **IGMP Management & IGMP Snooping** is the process of listening to Internet Group Management Protocol (IGMP) network traffic. The feature allows a network switch to listen in on the IGMP conversation between hosts, routers & receivers (IP***UHD Transmitters, the network switch, and IP***UHD Receivers). By listening to this flow of traffic the switch maintains a map of which links need which IP multicast streams i.e. which Blustream Multicast products are active and where the signal is being distributed to.
- **PoE** (Power over Ethernet) the Blustream IP***UHD and ACM devices are all capable of being powered by PoE. Power Supply Units are available for Blustream IP***UHD and ACM devices, however, the products are not sold with these included. PoE can be disabled on the switch if external PSU's are being used.

Network Topology for Multicast

Our recommendation for the set-up of a Blustream Multicast system would be to have the customers business, or home network be kept independent of the Blustream Multicast video distribution network. This negates the possibility of data flowing through one network reducing the performance of the other and vice-versa. The Blustream Control Module will act as a “bridge” between the two networks allowing for control data to be seamlessly transmitted between the two networks.

Where the the business / home network and Multicast network are sharing a switch/es (not recommended). We would suggest creating a separate VLAN for the Multicast network, ensuring there is a minimum 1Gb of bandwidth allocated to the VLAN. A networking professional should be consulted when designing this type of system to ensure the networks can co-exist on the same infrastructure.

Connecting to the Switch Web-GUI

To access the switch web-GUI, a connection between your computer and the switch should be made using an Ethernet cable.

Your computer must also be in the same IP range as the Araknis switch default IP address. If you are unsure how to update your computer IP range follow the 'Amending your IP Address' instructions towards the rear of this guide.

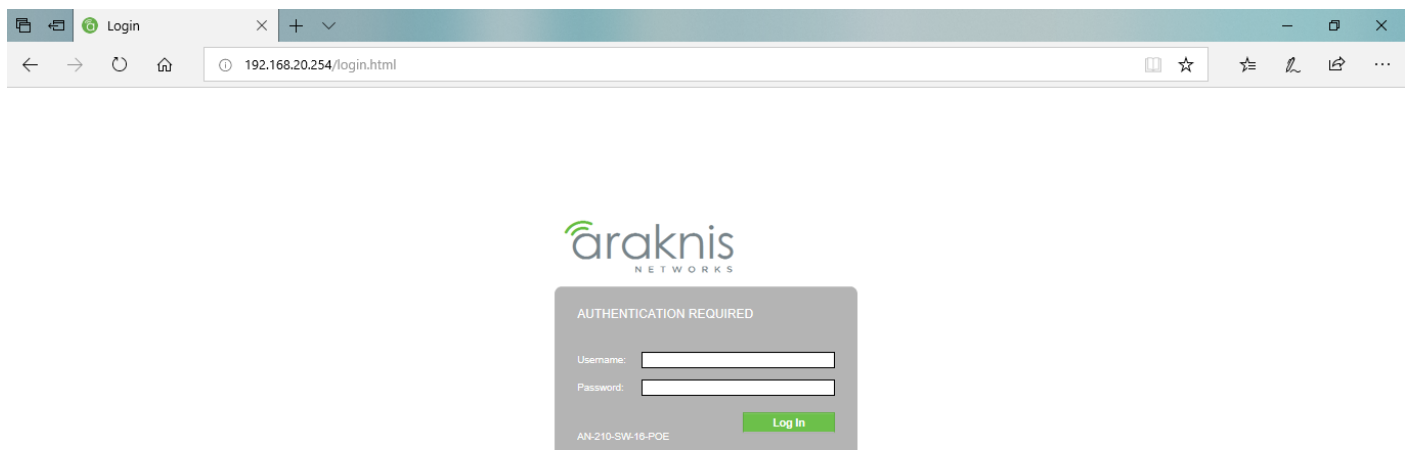
1. Open an internet browser (Google Chrome, Mozilla, Internet Explorer etc)
2. Type the network switch default IP address into the web browser bar
3. Enter the default user name and password

The switches factory default details are:

- IP Address: **192.168.20.254**
- User: **araknis**
- Password: **araknis**

Please note: if the switch is not using the factory default settings, or the switch has been used previously, you will need to know the login details.

For new Blustream Multicast systems, or where a switch is not brand new, we would recommend factory resetting the switch prior to commencing any further through this guide. For details of how to factory reset the network switch please refer to the network switch user manual.



Activating IGMP Snooping

In the left-hand menu tree, navigate to: **ADVANCED / MULTICAST / IGMP SNOOPING**

Enable the settings as highlighted below:

The screenshot shows the Araknis web interface for configuring IGMP Snooping. The left-hand menu tree is visible, with 'ADVANCED / MULTICAST / IGMP SNOOPING' selected. The main configuration area is titled 'IGMP SNOOPING' and contains several sections:

- Settings:** Includes 'Status' (Enabled/Disabled), 'Version' (V2/V3), 'Report Suppression' (Enabled/Disabled), and 'Unregistered IPMC Forward Action' (Flood/Drop). Red circles highlight the 'Enabled' status, 'V2' version, 'Enabled' Report Suppression, and 'Flood' action.
- VLAN Settings:** Includes 'VLAN ID' (1) and 'Fast Leave' (Enabled). Red circles highlight the 'Enabled' IGMP Snooping Status and 'Enabled' Fast Leave.
- Querier Settings:** A table with columns for VLAN ID, Querier State, Querier Version, Querier Status, Querier IP, Robustness, Interval, Oper Interval, Max Response Interval, Oper Max Response Interval, Last Member Query Counter, Last Member Query Interval, and Oper Last Member Query Interval. Red circles highlight the 'Enabled' Querier State and 'v2' Querier Version.
- Group List:** A table with columns for VLAN ID, Group IP Address, and Member Ports.
- Router Settings:** Includes 'VLAN ID' (1), 'Router Ports Auto-Learned' (Enabled), 'Dynamic Port List', 'Static Port List', and 'Forbidden Port List'. Red circles highlight the 'Enabled' Router Ports Auto-Learned.
- URC Settings:** Includes 'URC State' (Disabled) and 'Member Ports' (1). Red circles highlight the 'Disabled' URC State and '1' Member Ports.

At the bottom right, there are 'Apply' and 'Cancel' buttons.

Click **APPLY** to update the settings before navigating to the next page.

Activating Jumbo Frame

In the left-hand menu tree, navigate to: **SETTINGS / PORTS**

Set the Jumbo Frame size value to a minimum of 8,500. The value 9,216 is the maximum and is an acceptable value for use with Blustream Multicast.

The screenshot shows the Araknis 210 16 Port PoE web interface. The left-hand menu tree is expanded to **SETTINGS / PORTS**. The **PORT SETTINGS** page is displayed. Under the **Jumbo Frame** section, the **Size** is set to **9216 Bytes (1522-9216)**, which is circled in red. Below this is the **Basic Port Settings** table.

Port	Name	Speed	Duplex
1	Port 1	Auto	Auto
2	Port 2	Auto	Auto
3	Port 3	Auto	Auto
4	Port 4	Auto	Auto
5	Port 5	Auto	Auto
6	Port 6	Auto	Auto
7	Port 7	Auto	Auto
8	Port 8	Auto	Auto
9	Port 9	Auto	Auto
10	Port 10	Auto	Auto
11	Port 11	Auto	Auto
12	Port 12	Auto	Auto
13	Port 13	Auto	Auto
14	Port 14	Auto	Auto
15	Port 15	Auto	Auto
16	Port 16	Auto	Auto
SFP1	SFP 1	Auto	Full
SFP2	SFP 2	Auto	Full
LAG1	LAG 1	Auto	Auto
LAG2	LAG 2	Auto	Auto

Click **APPLY** to update the setting.

Configuration of the Araknis switch is now complete. A back up of the configuration can be saved to your PC by navigating to: **MAINTENANCE / FILE MANAGEMENT**

Alternatively, the config file for the settings within this guide can be located in the same folder this guide is saved to from the Blustream website.

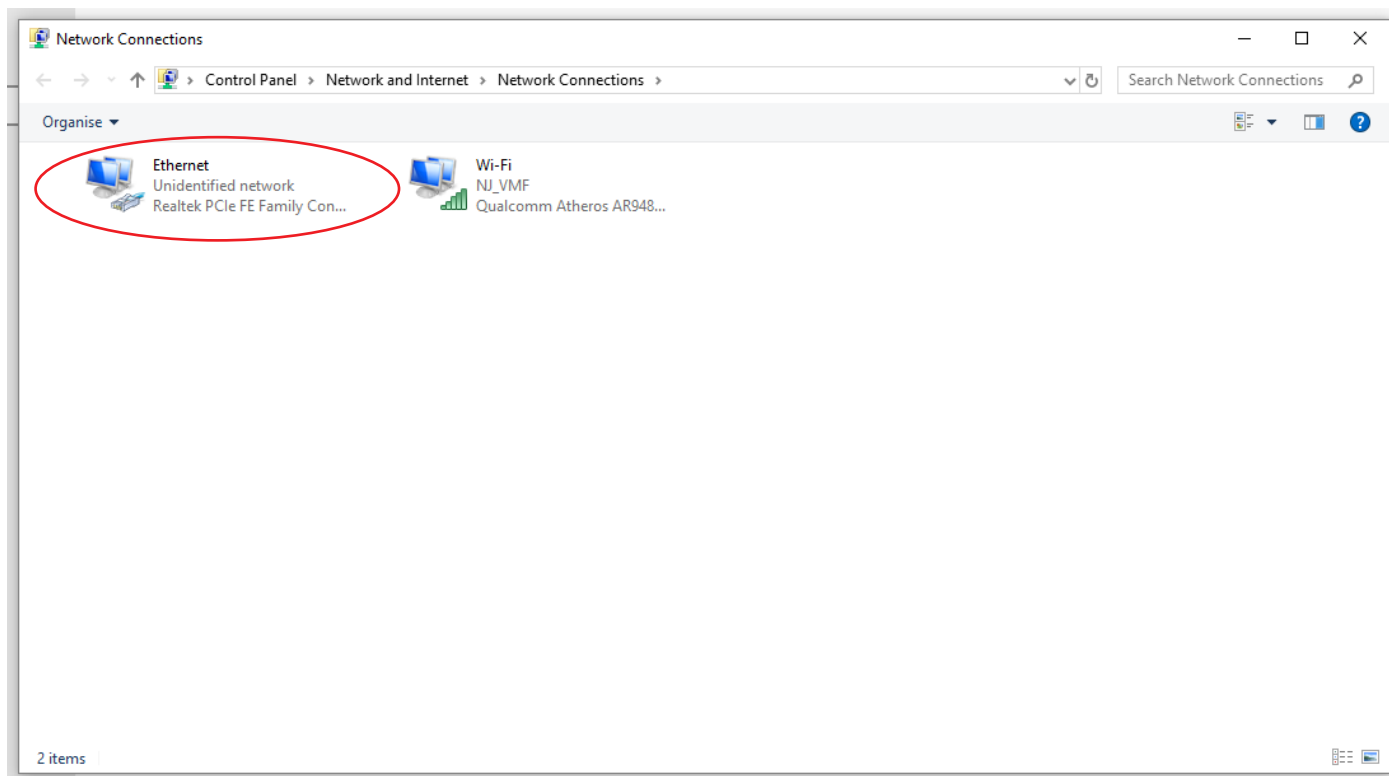
Navigate to: www.blustream.co.uk / www.blustream.com.au

VIDEO OVER IP / VIDEO OVER IP EXTENDERS / IP*UHD-TX or RX LEARN MORE**

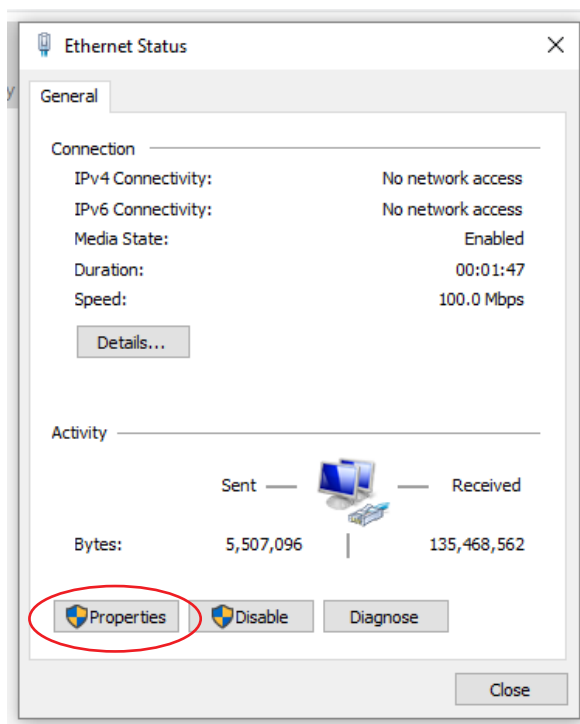
Click on the blue download button located towards the bottom of the page marked: **LAN SWITCH GUIDES**

Amending your IP Address in Windows

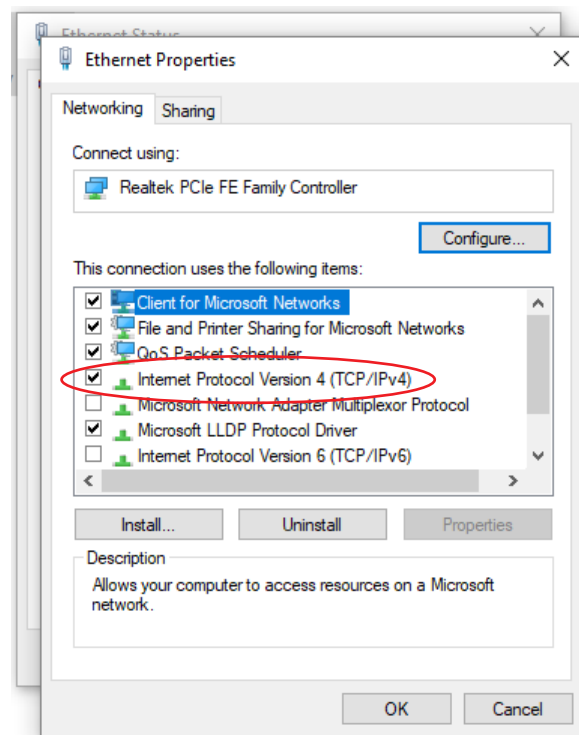
1. Connect the computer to the network switch using an Ethernet cable
2. Navigate to: **CONTROL PANEL / NETWORK & INTERNET / NETWORK CONNECTIONS**
3. Double click on the Ethernet connection as highlighted below:



4. In the pop-up window that appears, click on: **PROPERTIES**



5. In the pop-up window that appears, double-click on: **INTERNET PROTOCOL VERSION 4 (TCP/IPv4)**



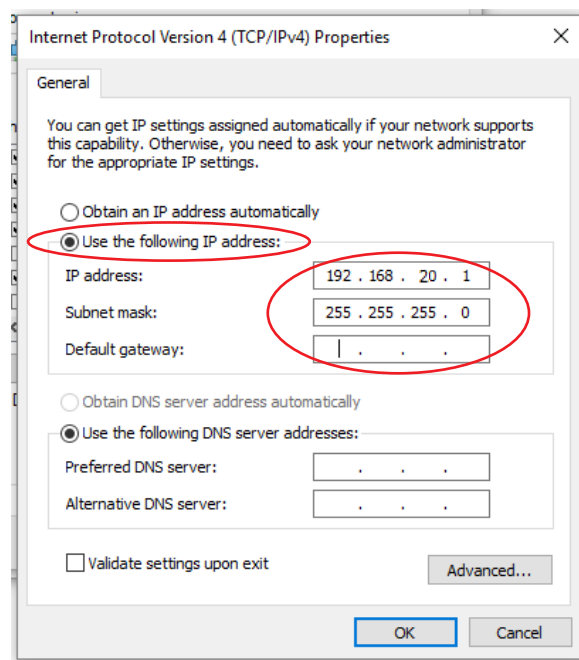
5. In the pop-up window that appears, double-click on the button marked: **USE THE FOLLOWING IP ADDRESS**

6. Enter the details as below:

IP Address: **192.168.20.1**

Subnet mask: **255.255.255.0**

Default gateway: *Leave this field blank*



7. Click: **OK / OK / CLOSE**

Your Windows PC will now be working in the IP range as set above and you will now be able to communicate with the equipment working within the same IP range.

Amending your IP Address in Mac OS

1. Connect the Mac to the network switch using an Ethernet cable
2. Click on the Network Connections icon in the toolbar at the top of the desktop
3. Navigate to: **OPEN NETWORK PREFERENCES**

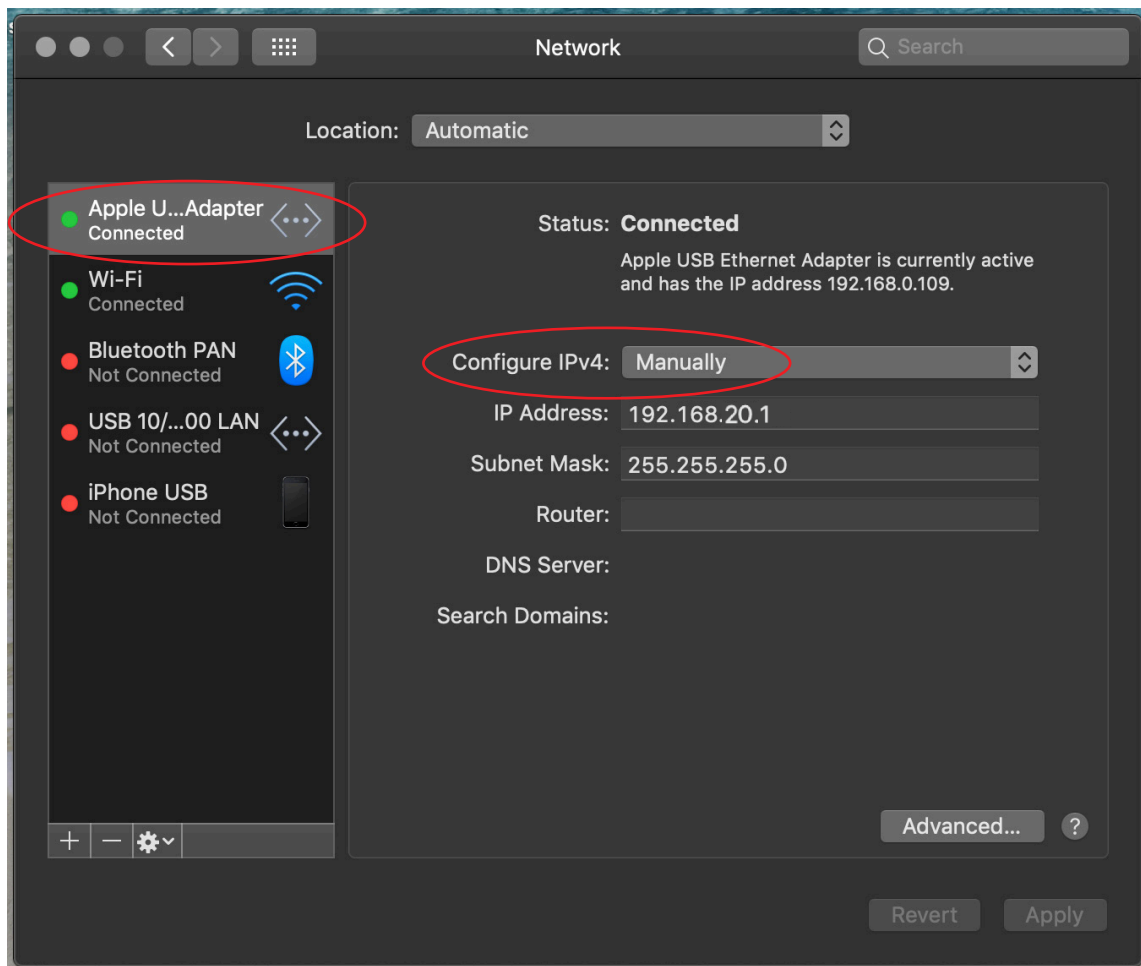


4. Find the active Ethernet connection to the network switch on the left-hand menu tree
5. Use the drop-down box marked: **CONFIGURE IPv4** and set to: **MANUALLY**
6. Enter the details as below:

IP Address: **192.168.20.1**

Subnet mask: **255.255.255.0**

Router: *Leave this field blank*



7. Click: **APPLY** at the bottom of the page and close.

Your Mac will now be working in the IP range as set above and you will now be able to communicate with the equipment working within the same IP range.



www.blustream.com.au
www.blustream-us.com
www.blustream.co.uk