

Line / MIC 2+2 XLR Dante® Audio Wall Plate US

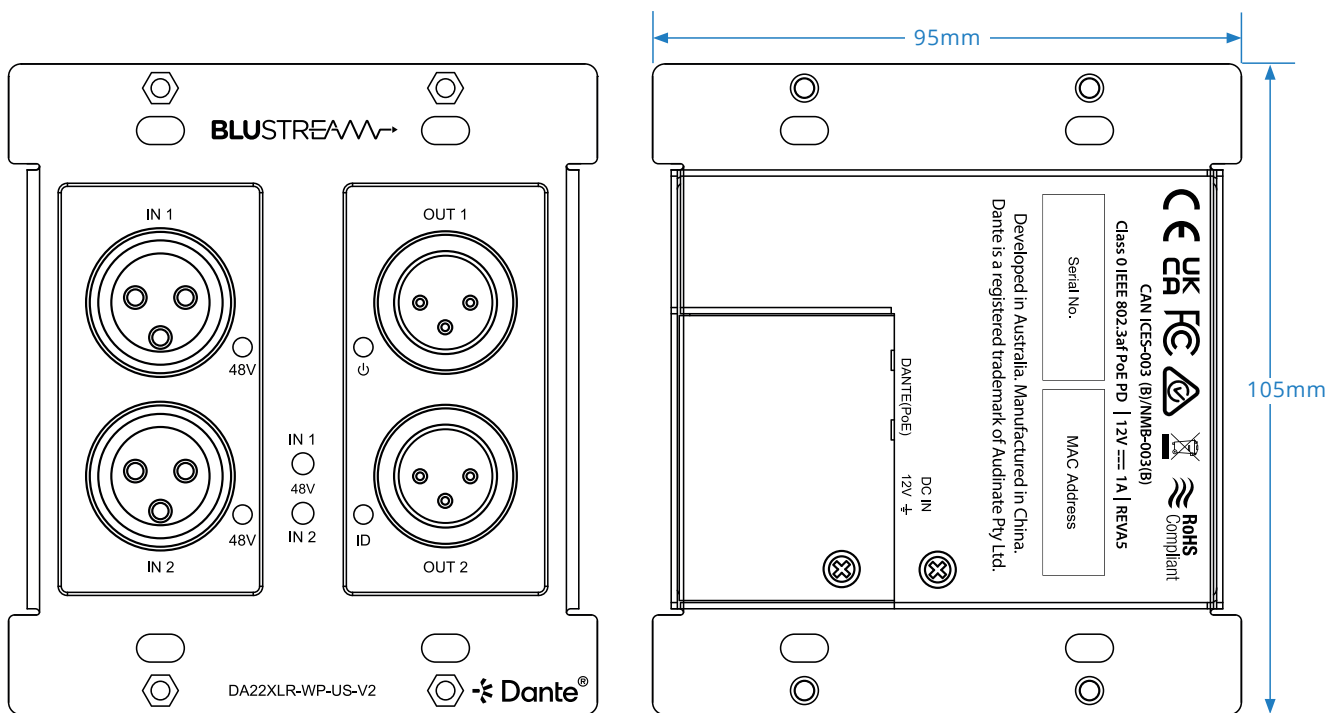
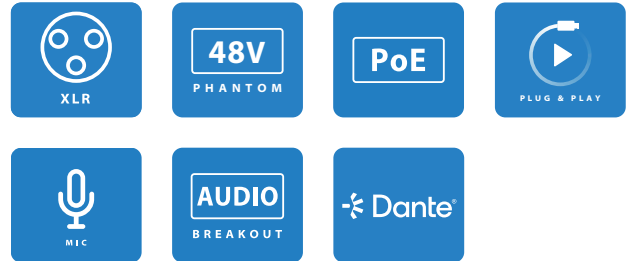
Description

The DA22XLR-WP-V2 is a multi-input / output wall plate to convert analogue audio within a digital Dante® networked audio system.

The DA22XLR-WP-V2 converts 2 input channels of balanced / unbalanced / MIC audio with switchable 48v Phantom power to Dante® digital audio, and 2 channels of Dante® audio to 2 output channels of balanced / unbalanced audio.

The DA22XLR-WP-V2 is a plug & play device that is powered using PoE (Power over Ethernet), or via 12V power supply, offers support for AES67 RTP audio transport and magnetic faceplate design allows installation into most double-gang US junction boxes.

The DA22XLR-WP-V2 is the ideal BYOD interface to a Dante® audio system.

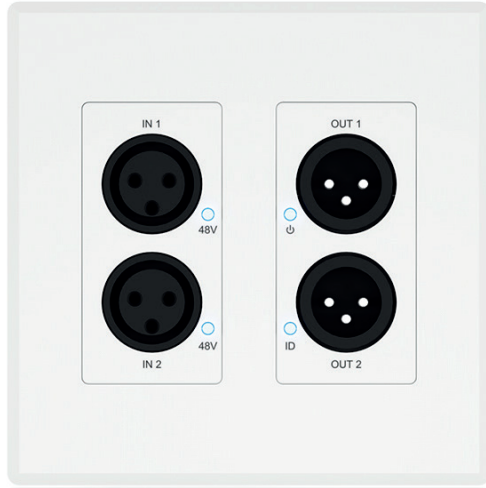


Key Features

- Dante® network wall plate interface for 2 x audio inputs and 2 x audio outputs
- Converts 2 x balanced / unbalanced / MIC audio sources to Dante® audio channels
- Converts 2 x Dante® audio channels to balanced / unbalanced audio outputs
- Switchable 48V Phantom power for each MIC XLR input
- Adjustable MIC / line sensitivity from +24dBu to -28dBV for each XLR input
- Adjustable line gain from +20 dBu to -28 dBV for each XLR output
- Supports: 44.1, 48, 88.2 & 96kHz sample rates @ 16, 24 or 32 Bit
- Configurable Dante® device latency (supports 2, 3, 4, 5 or 10ms configurable using Dante® Controller)
- Supports AES67 RTP audio transport
- Features Class 0 IEEE 802.3af PoE for powering of product from any PoE switch
- Supports power via 12V DC adapter (not included) for when network switch does not support PoE
- Magnetic faceplate surround and US Decora style backbox compatibility
- In-built web-GUI for configuration and control

*Dante® is a registered trademark of Audinate Pty Ltd

Blustream cannot be held responsible for errors in typography or photography. Specifications are subject to change without notice.



Specifications

- **Module Dimensions (L x W x H):** 105mm x 95mm x 45mm (without faceplate)
- **Faceplate Dimensions (L x W x H):** 115mm x 115mm x 5mm
- **Cut Out Dimensions (L x W x H):** 89mm x 71mm x 41mm
- **Mounting hole spacing:** US 83.5mm CTC
- **Backbox Requirements:** US double gang junction box
- **Shipping Weight:** 0.6kg
- **Operating Temperature:** 32°F to 104°F (0°C to 40°C)
- **Storage Temperature:** - 4°F to 140°F (- 20°C to 60°C)
- **Power Supply:** Class 1 IEEE 802.3af PoE or 12V/1A DC 2-Pin Phoenix connector

Package Contents

- 1 x DA22XLRWP-US-V2
- 1 x Magnetic Faceplate
- 1 x Quick Reference Card

Connectivity

- **Audio Input Connectors:** 2 x Analogue balanced / unbalanced 3-Pin XLR connector
- **Audio Output Connectors:** 2 x Analogue balanced / unbalanced 3-Pin XLR connector
- **Network Connectors:** 1 x PoE Dante® Ethernet connection (RJ45)
- **Configuration Switches:** 2 x Push button (48V Phantom power)
- **Firmware Upgrade:** 1 x Micro-USB

Acknowledgements

Dante® is a registered trademark of Audinate Pty Ltd.

Regulatory Compliance



Blustream cannot be held responsible for errors in typography or photography. Specifications are subject to change without notice.